



Cospowers Technology Co., Ltd.

No.28, Dongqi Road, Dongying City, Shandong Province, PRC

Harbin Coslight New Energy Co., Ltd.

No.8 Taihunan Road, Jizhong Area, Yingbin Road, Development Zone, Harbin, PRC

Shenzhen Coslight Technology Co., Ltd.

No.2,Guangtian Road, No.3 Industrial Zone, Luotian Community, Yanluo Street, Baoan District, Shenzhen, Guangdong Province, PRC

Changde Cospowers New Energy Technology Co., Ltd.

NO.4,Songlin Road, Economic and Technological Development Zone, Changde City, Hunan Province,PRC

Cospowers Technology Company limited Changsha Branch

Building 13, Phase I, Zhongdian Software Park, Yuelu District, Changsha City, Hunan Province,PRC

Anhui Cospowers New Energy Technology Co., Ltd.

No.1, Jing18 Road, Tiankang Avenue, Tianchang City, Anhui Province, PRC

Cospowers Company Ltd.

909-15, Ganam-ro, Ganam-eup, Yeosu-si, Gyeonggi-do, Republic of Korea

Cospowers America Inc.

1438 martingale ct,san dimas,CA91773

Cospowers GmbH

Taufsteinstr. 1, 63477 Maintal, Germany

Beijing Cospowers New Energy Co., Ltd.

No.169,Jijiamiao Road, Fengtai District, Beijing,PRC

Hongkong Cospower Technology Co., Ltd.

Flat A, 12/F, MW Tower II, 5 Kimberley Street, TST Kowloon, Hongkong, PRC

Lexel Battery (Shenzhen) Co., Ltd.

No.2 Guangtian Road, No.3 Industrial Zone, Luotian Community, YanluoStreet, Baoan District, Shenzhen, PRC

Dali Cospowers New Energy Technology Co., Ltd.

Phase II, Shangdeng Industrial Park, Jingkai District, Dali City, Yunnan Province, PRC

Guangdong Cospowers New Energy Co., LTD

No.23,Gantang Avenue, Wujiang District, Shaoguan City, Guangdong Province, PRC

Cospowers B.V.

Prins Hendrikkade 21 E, 1012TL Amsterdam, Netherland

India Cospower

10-2-99/1, No 304, Sterling Grand CVK, West Marredpally, Hyderabad -500026 Telangana, India

COSPOWERS

HANDBOOK OF
HOUSEHOLD ENERGY STORAGE
PRODUCTS

Cospowers Technology Co., Ltd.



ABOUT COSPOWERS

Cospowers Technology Co., LTD. ,is a high-tech enterprise focusing on the field of new energy storage. The technical team has been deeply engaged in the field of energy storage batteries for more than 30 years, with R & D, manufacturing, sales and service capabilities of materials, cells, battery management systems, energy management systems, system integration, etc., and has provided diversified products and systematic solutions in the fields of power storage, communication energy storage, network energy storage, household energy storage, and consumer batteries for more than 60 countries and regions around the world.

16GWh+

Cumulative global shipments

Tier1

BloombergNEF energy storage

850K m²

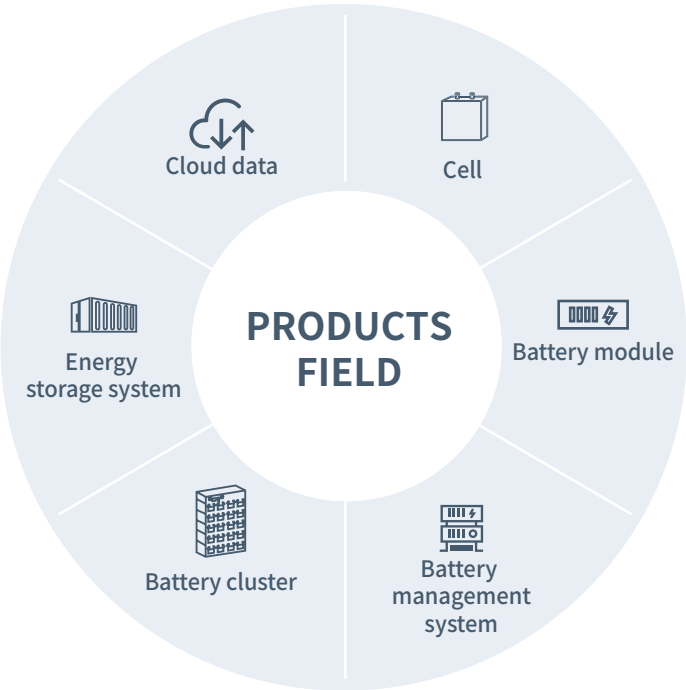
Factory area

400+

Patented technology and software

30+

Standard formulation participations



GLOBAL LAYOUT

Cospower always adheres to the brand concept of openness, innovation and responsibility and has established a perfect global marketing network, service network, supply chain network and logistic network system. With branch offices in 17 countries and regions worldwide, it has nearly 20 regional service centers and spare parts warehouses, covering business operations in over 60 countries and regions worldwide, and maintaining a foreign sales and after-sales service team of 200 people.

60+

Service coverage

16

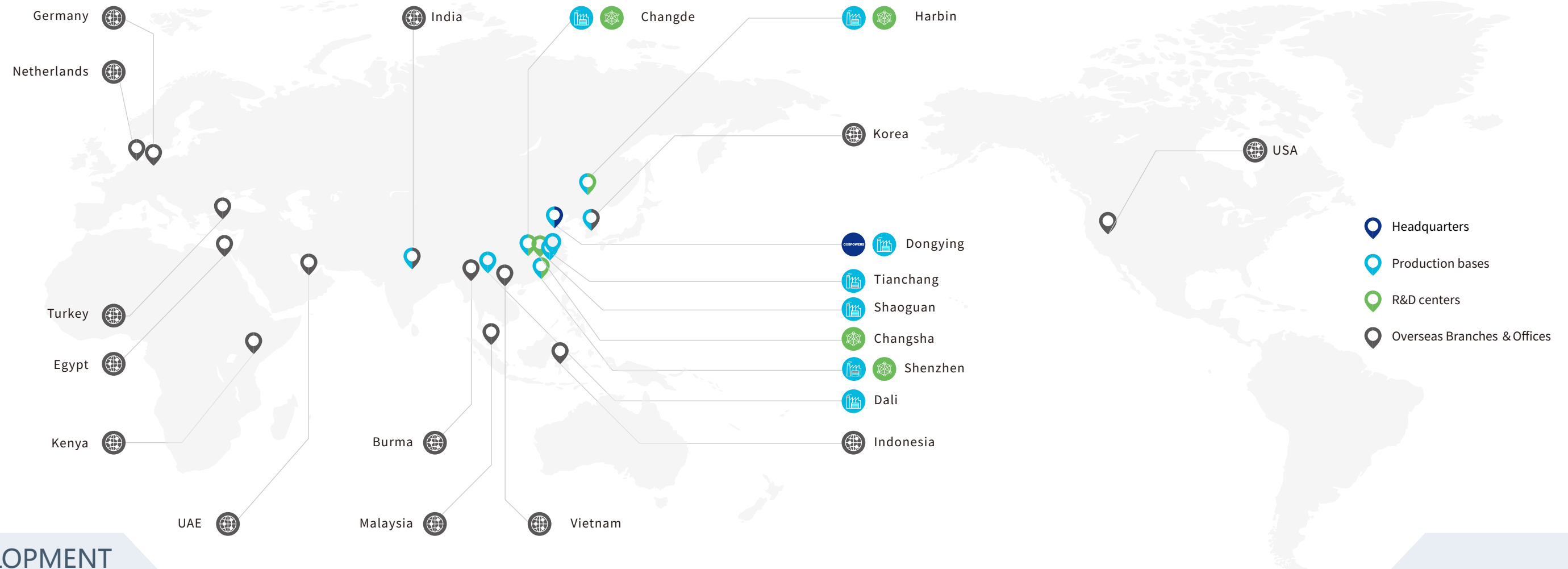
Domestic and foreign subsidiary companies

7

Production Base
Harbin,Dongying,Changde,Dali,
Tianchang,Shenzhen,Shaoguan

5

R&D Centers
Harbin,Dongying,Changde,
Shenzhen,Changsha.



DEVELOPMENT HISTORY

2000

China's first batch of lithium-ion battery R&D and manufacturing enterprises;

2012

No.1 market share in the lithium ion energy storage of international communication base station;

2019

Cospowers was established; Changde Cospowers New Energy Co., Ltd was established;

2021

"Simple" series energy storage cell was released; Changde plant of 1.5GWh was put into operation; The United Nations supply chain light storage business was obtained, and the energy storage system went to sea for the first time; Smart lithium battery energy storage products was released;

2023

Dali plant of 1.5GWh was put into operation; The 720MWh energy storage system order bidding was won; Cospowers of Guangdong, Netherlands were established successively;

2007

China's first group of R&D and manufacturing of power lithium-ion battery enterprises;

2013

Shenzhen Coslight was established;

2020

Dongying factory of 3GWh was put into operation;

2022

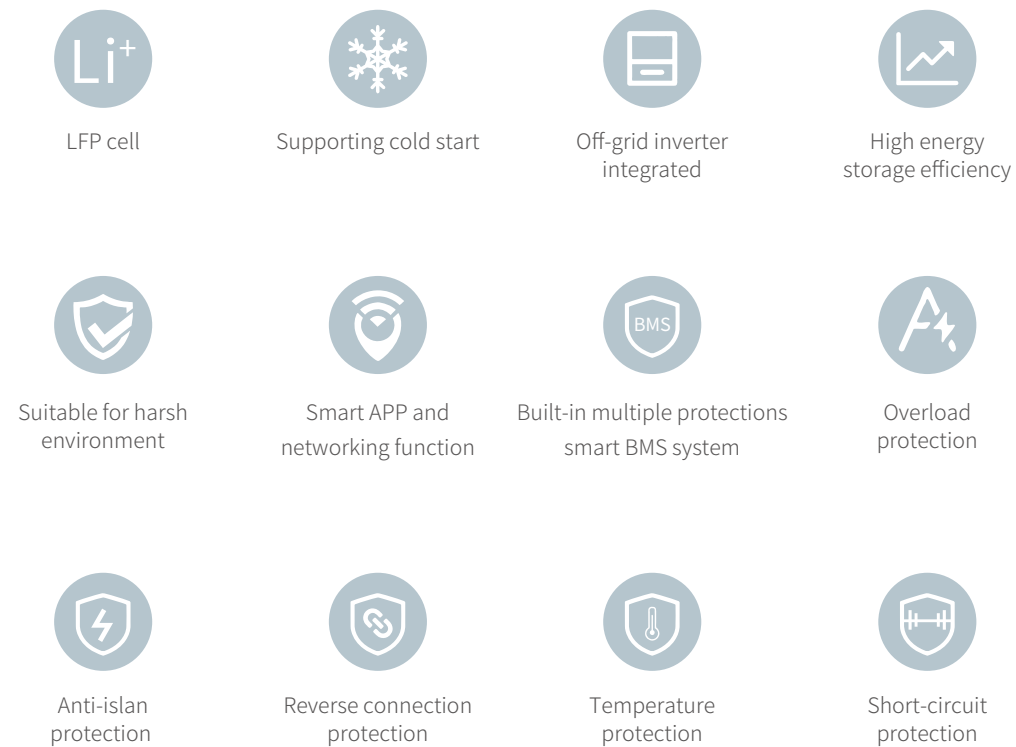
Cospowers of Beijing, Anhui, India, South Korea have been established successively; A single 100MWh+ energy storage system successfully connected to the grid; Changsha Technology Institute was established; The high energy liquid cooled energy storage system products was released, and the 80MWh system applications was realized;

2024

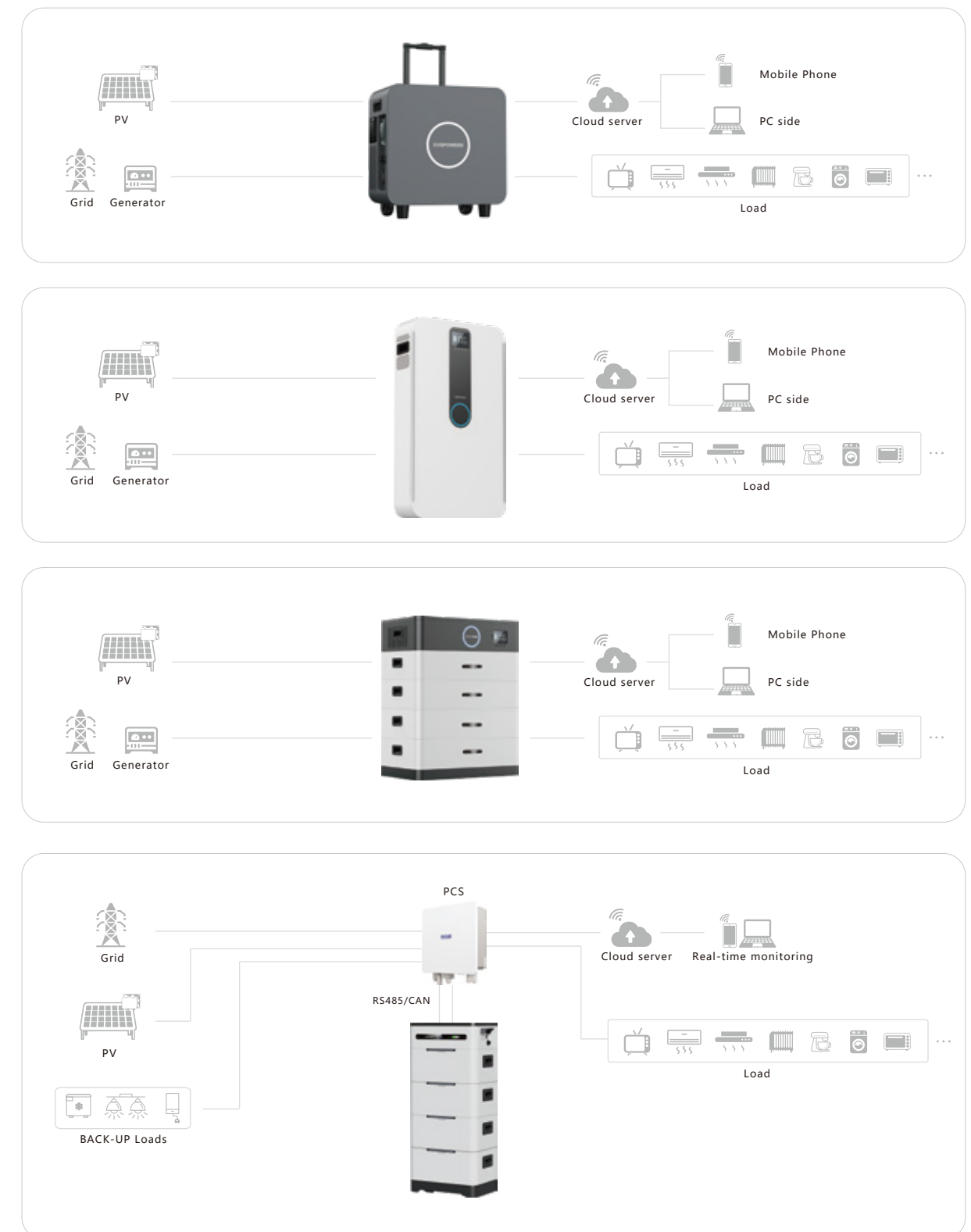
Cospowers Technology Co., Ltd was established; Changde 1.5GWh sodium battery production line started; Anhui plant of 1.5GWh was put into operation;

1 HOUSEHOLD ENERGY STORAGE PRODUCTS

[⚡] PRODUCT PERFORMANCE



[⚙️] WORKING PRINCIPLE



PowerPorter-CR5000-5

PORTABLE ENERGY STORAGE POWER SOLUTIONS



PowerPorter-CR5000-5 series of portable energy storage battery is a high-tech product with multiple application scenarios which was developed by Shenzhen Coslight with lithium battery modules, hybrid inverter and EMS integrated inside and can be connected with PV, Grid, and load to operate. The charge mode can be selected according to the application scenarios. It is configured with mains charge at home and solar power panel outdoor. The system supports multiple working modes. It is suitable for scenes of household emergency power backup (Power shortage, power failure and typhoons, earthquakes and other natural disasters), house repair, grass cutting, aerial photography power supply, outdoor small music party, self-driving travel, emergency rescue, construction site power supply, etc.



PRODUCT FEATURE

- Extreme simple appearance design, elegant and beautiful
- Draw-bar box design, easy to move, plug and play, simple operation
- Multiple electrical protection, safe and reliable, adopting LFP cells, safe and stable
- Possess ISO/Android. App to monitor
- Built-in 5.12 KWh batteries, with long-term power supply
- Multiple functions of AC power source socket, with convenient usage
- Multiple power supply modes, green energy, supporting solar power charge and mains charge
- With multiple operating modes, it meets the requirements of different application scenarios



APPLICATIONS

- Emergency Backup power
- House repairs and mowing
- Portable charging and lighting
- Backup power for traveling and aerial photography
- Emergency rescue
- Construction site power supply



PowerPorter-CR5000-5

PORTABLE ENERGY STORAGE POWER SOLUTIONS

Parameters/ Model		CR5000-5
AC input parameters	AC input range	170~280V
	AC input frequency	50/60Hz
	AC max charge current	60A(0~60A settable)
PV input parameters	Recommended PV max power	4400W
	OCV	145V
	MPPT voltage range	60~115V
	Maximum charging current	80A
Battery Parameters	Rated voltage	51.2V
	Voltage range	45~57.6V
	Energy	5120Wh
	Max discharge rate	0.25C/0.5C
	Max charge rate	0.5C/1C
	Battery type	LFP
AC output parameter	Rated power	5000W
	Surge power	10000VA
	Rated output voltage	220/230/240Vac
	Output current	22A
	Rated frequency	50/60Hz
	Operating temperature range	0~55°C
Operating conditions	Storage temperature range	-15~60°C
	Humidity	5~95%
	Heat dissipation method	Air cooling
	Weight	66kg
	Size (W*D*H)	540*532*316mm
	Protection level	IP20
	Communication method	RS485/WIFI
Others	Certification	IEC62619、IEC62109、CE-EMC

PowerHive-CW5000-5

SINGLE PHASE HYBRID(OFF-GRID) ENERGY STORAGE SYSTEM



PowerHive-CW5000-5 series of wall hanging energy storage all in one power supply is a high-tech product for multiple application scenarios which was developed by Shenzhen Coslight with lithium battery modules, off-grid inverter and BMS integrated inside and can be connected with PV, grid, and load to operate. The charge modes can be selected according to the different scenarios. The system has multiple working modes to choose, to meet the requirements of different application scenarios. It is suitable for scenes of household emergency power backup (power shortage, power failure, typhoon, earthquake and other natural disasters), peak and valley price arbitrage, self-generating self-use, etc., and has outstanding advantages in the application field of household energy storage.



PRODUCT FEATURE

- Homely style, elegant and beautiful
- Single-phase European standard and single-phase American standard design, supporting multi-system grid voltage standards
- Multiple working modes (photovoltaic priority, mains priority, inverter priority)
- Built-in Max. 10.24KWh battery with long time power supply
- Simple installation and maintenance, the customized design meets the requirements of different customers
- Possess ISO/Android. App Monitoring
- Multiple protection and alarm system, safe and reliable



APPLICATIONS

- Self-generating ,self-use
- Power Consumption and Backup
- Fuel-electricity complementarity
- Peak load shifting



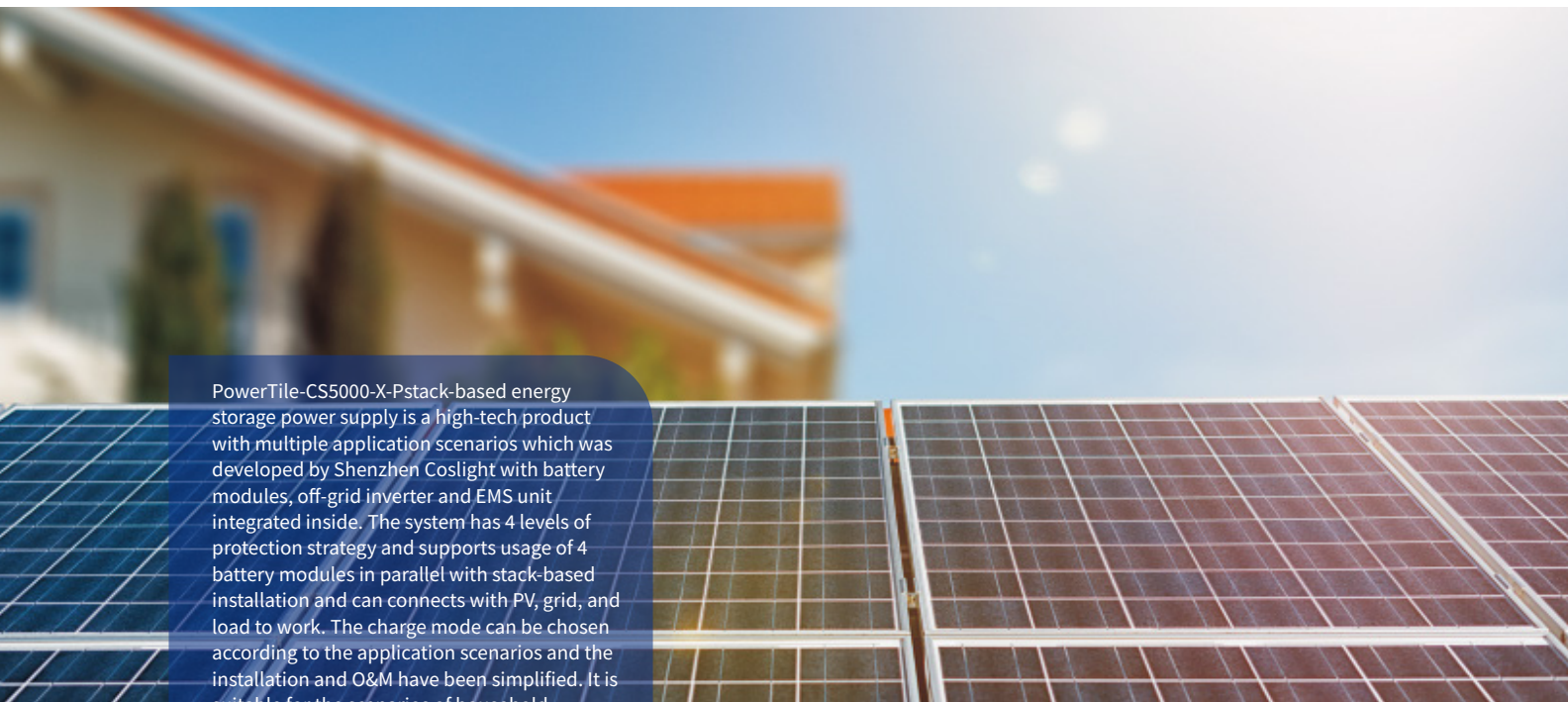
PowerHive-CW5000-5

SINGLE PHASE HYBRID(OFF-GRID) ENERGY STORAGE SYSTEM

Parameters/ Model		CW5000-5	CW5000-10
AC Input Parameters	AC input range	UPS mains mode;170-280;APL generator mode 90-280	
	AC input frequency	50/60Hz (automatic detection)	
	AC max charge current	60A	
PV Input Parameters	Recommended PV max power	4400W	
	OCV	145V	
	MPPT voltage range	60~115V	
	Charge current	80A	
Battery Parameters	Rated voltage	51.2V	
	Voltage range	45~57.6V	
	Energy	5120Wh	10240Wh
	Max discharge rate	0.25C/0.5C	
	Max charge rate	0.5C/1C	
	Battery type	LFP	
AC output parameter	Rated power	5000W	
	Surge power	10000W	
	Rated output voltage	220/230/240Vac	
	Output current	/	
	Rated frequency	50/60Hz	
	Operating temperature range	0~55℃	
Operating conditions	Storage temperature range	-15~60℃	
	Humidity	5~95%	
	Heat dissipation method	Air cooling	
	Weight	87Kg	120Kg
	Size(W*D*H)	530*160*870mm	550*160*1350mm
	Protection level	IP20	
	Communication method	WIFI/RS485	
	Others		
Certification		IEC62619、IEC62109、CE-EMC	

PowerTile-CS5000-X-P

SINGLE PHASE HYBRID(OFF-GRID) ENERGY STORAGE SYSTEM



PowerTile-CS5000-X-Pstack-based energy storage power supply is a high-tech product with multiple application scenarios which was developed by Shenzhen Coslight with battery modules, off-grid inverter and EMS unit integrated inside. The system has 4 levels of protection strategy and supports usage of 4 battery modules in parallel with stack-based installation and can connects with PV, grid, and load to work. The charge mode can be chosen according to the application scenarios and the installation and O&M have been simplified. It is suitable for the scenarios of household emergency power backup (power shortage, power failure, typhoons, earthquakes and other natural disasters), peak and valley price arbitrage, and self-generating and self-use, and has outstanding advantaged in the application filed of household energy storage.



PRODUCT FEATURE

- Homely style, elegant and beautiful;
- Single-phase European standard and single-phase American standard design, supporting multi-system grid voltage standards;
- Multiple working modes (photovoltaic priority, mains priority, inverter priority);
- Simple installation and maintenance, the customized design meets the requirements of different customers;
- Possess ISO/Android. App to monitor
- Single battery 5.12kWh, expandable up to 20.48KWh;
- Multiple protection and alarm system, safe and reliable.



APPLICATIONS

- Self-generating ,self-use
- Power Consumption and Backup
- Fuel-electricity complementarity
- Peak load shifting

PowerTile-CS5000-X-P

SINGLE PHASE HYBRID(OFF-GRID) ENERGY STORAGE SYSTEM

Parameters/ Model		CS5000-5-P	CS5000-10-P	CS5000-15-P	CS5000-20-P
Mains input parameters	Mains max charge current	60A			
	Rated input voltage	220/230/240V			
	Input Voltage Range	UPS mains mode;170~280V;APL generator mode 90~280V			
	Frequency	50/60Hz(automatic detection)			
	Conversion time (bypass and inverter)	10ms (typical value)			
	Maximum bypass overload current	40A			
PV input parameters	Number of MPPTs	1			
	PV OCV	145V			
	PV Operating voltage range	60~145V			
	MPPT voltage range	60~115V			
	Max PV input current	50A			
	Max input power	4400W			
AC Output Parameters	PV Max charge current	80A			
	Output voltage waveform	Pure sine wave			
	Output voltage	230A (220/240A)			
	Rated output power	5000W/VA			
Battery Parameters	Output frequency range	50/60Hz±0.3Hz			
	Rated voltage	51.2V			
	Voltage Range	45~57.6V			
	Energy	5.12kWh	10.24kWh	15.36kWh	20.48kWh
	Max discharge rate	0.25C/0.5C			
	Maximum charge and discharge rate	0.5C/1C			
	Battery Type	LFP			
Operating conditions	Operating temperature range	0~45°C			
	Storage temperature range	-15~60°C			
	Humidity	5~95%			
	Cooling Method	Air cooling			
	Weight	80Kg	130Kg	180Kg	230Kg
	Size (W*D*H)	725*515*350mm	725*515*490mm	725*515*630mm	725*515*770mm
	Communication port	WIFI/ RS485			
Others	Certification	IEC62619, IEC62109, CE-EMC			

PowerTile-CS5000H-X-P

SINGLE PHASE HYBRID(OFF-GRID) ENERGY STORAGE SYSTEM



PowerTile-CS5000-X-Pstack-based energy storage power supply is a high-tech product with multiple application scenarios which was developed by Shenzhen Coslight with battery modules, off-grid inverter and EMS unit integrated inside. The system has 4 levels of protection strategy and supports usage of 4 battery modules in parallel with stack-based installation and can connects with PV, grid, and load to work. The charge mode can be chosen according to the application scenarios and the installation and O&M have been simplified. It is suitable for the scenarios of household emergency power backup (power shortage, power failure, typhoons, earthquakes and other natural disasters), peak and valley price arbitrage, and self-generating and self-use, and has outstanding advantaged in the application filed of household energy storage.



PRODUCT FEATURE

- Homely style, elegant and beautiful;
- Single-phase European standard and single-phase American standard design, supporting multi-system grid voltage standards;
- Multiple working modes (photovoltaic priority, mains priority, inverter priority);
- Simple installation and maintenance, the customized design meets the requirements of different customers;
- Possess ISO/Android. App to monitor
- Single battery 5.12kWh, expandable up to 20.48KWh;
- Multiple protection and alarm system, safe and reliable.



APPLICATIONS

- Self-generating ,self-use
- Power Consumption and Backup
- Fuel-electricity complementarity
- Peak load shifting

PowerTile-CS5000H-X-P

SINGLE PHASE HYBRID(OFF-GRID) ENERGY STORAGE SYSTEM

Parameters/ Model		CS5000H-5-P	CS5000H-10-P	CS5000H-15-P	CS5000H-20-P
Inverter output	Rated output power	5500W			
	Peak power	11000VA			
	Rated output voltage	230Vac Single-phase			
	Frequency	50/60±0.3Hz			
	Switching time	10ms			
PV input parameters	Number of MPPTs	2			
	PV open-circuit voltage	500/500V			
	Maximum input power	4000+4000V			
	MPPT voltage range	120~450Vdc			
	Maximum PV input current	16/16A			
Mains/ generator input	Maximum short-circuit current	27/27A			
	Input voltage range	90~280Vac			
	Input frequency range	50/60Hz			
Battery Parameters	Maximum bypass current	40A			
	Battery type	LFP			
	Battery rated voltage	51.2			
	Voltage range	46.4~58.4V			
	Battery capacity	5.12kWh	10.24kWh	15.36kWh	20.48kWh
Operating conditions	Maximum charge/discharge rate	0.5/1C			
	Charging temperature range	5~55℃			
	Discharging temperature range	-15~60℃			
	Humidity	5~95%			
	Cooling method	Air cooling			
	Weight	107Kg	157Kg	207Kg	257Kg
	Size (W*D*H)	725*515*445mm	725*515*585mm	725*515*725mm	725*515*865mm
	Communication method	WIFI/RS485			
Others	Certification	IEC62619、IEC62109、CE-EMC			

PowerCrate-CE-5/15

LOW VOLTAGE WALL HANGING TYPE-ENERGY STORAGE BATTERY



PowerCrate-CE-5 and PowerCrate-CE-15 wall hanging energy storage power supply is a high-tech product with multiple application scenarios which was developed by Shenzhen Coslight. The battery has small size, light weight with long cycle life and supports rapid charging. It adopts advanced intelligent power supply with protection functions of over charge, over discharge, over current, and temperature and has outstanding advantages in the application field of household energy storage.



PRODUCT FEATURE

- Extreme simple appearance design, elegant and beautiful
- Protection class IP40
- It supports multiple battery modules in parallel, up to 8 modules
- Easy installation and maintenance, customized design to meet the requirements of different customers
- Multiple protection and alarm system, safe and reliable



APPLICATIONS

- Power Consumption and Backup
- Grid peak and valley electricity price arbitrage
- Get subsidy from grid dispatching



PowerCrate-CE-5/15

LOW VOLTAGE WALL HANGING TYPE-ENERGY STORAGE BATTERY

Parameters/ Model		CE-5	CE-15
Battery Parameters	Rated voltage	51.2V	
	Voltage range	45~57.6V	44.8~57.6V
	Energy	5120Wh	14340Wh
	Max discharge rate	0.5C/1C	0.5/1C
	Type of battery	LFP	
Operating condition	Operating temperature range	0~45℃	
	Storage temperature range	-15~60℃	-15~30℃
	Humidity	5~95%	
	Dissipation method	Natural cooling	
	Weight	53Kg	112Kg
	Size (W*D*H)	430*186*600mm	413*233*825mm
	Installation method	Wall-mounted	Portable floor-standing
Others	Communication method	CAN/RS485	
	Matched inverter	Pylontech, Growatt, Shorun, Goodwe, Jinlang, Pengcheng, RYR, Victron, Sorou, Schneider, SMA, MSL, Topower, STUDER	Pylontech, Growatt, Shorun, GoodWe, Pengcheng, Maiden Voyage, RYR, Victron, Sorou, Schneider, SMA, MSL, Topower, STUDER
	Certification	IEC62619, CE-EMC, FCC, UL1973, UL9540A	

PowerTile-CE-X-S

HIGH VOLTAGE ENERGY STORAGE BATTERY SYSTEM



PowerTile-CE-X-S series of high voltage stack-based energy storage battery is a high-tech product with multiple application scenarios which was developed by Shenzhen Coslight with battery modules, HVC box and BMS unit integrated inside. The system has 4 levels of protection strategy and supports usage of 2-6 battery modules in parallel. With stack-based installation method, the installation and O&M are simplified. It is suitable for the scenarios of household emergency power backup (power shortage, power failure, typhoons, earthquakes and other natural disasters), peak and valley price arbitrage, and self-generating and self-use, and grid dispatching subsidy, etc.



PRODUCT FEATURE

- Homely style, elegant and beautiful
- With high voltage stack-based design, the backup energy can be expanded flexibly
- Multiple electrical protections, safe and reliable
- Adopting LFP cells, safe and stable
- Single battery 5.12kWh, it can be expanded to 30.72KWh



APPLICATIONS

- Self-generating ,self-use
- Power Consumption and Backup
- Smart home energy management
- Grid peak and valley electricity price arbitrage
- Get subsidy from grid dispatching



PowerTile-CE-X-S

HIGH VOLTAGE ENERGY STORAGE BATTERY SYSTEM

Parameters/ Model		CE-10-S	CE-15-S	CE-20-S	CE-25-S	CE-30-S
Electrical Parameters	System structure					
	Stacking capacity	10.24kWh	15.36kWh	20.48kWh	25.6kWh	30.72kWh
	Number of batteries in series	2 pcs	3 pcs	4 pcs	5 pcs	6 pcs
	Rated voltage	204.8V	307.2V	409.6V	512V	614.4V
Operating conditions	Voltage range	179.2~227.2V	268.8~340.8V	358.4~454.4V	448~568V	537.6~681.6V
	Rated capacity	50Ah				
	Continuous charge current	12.5A(recommended)/25A (max)				
	Continuous discharge current	25A(recommended)/50A (max)				
	Communication method	RS485/CAN				
	Protection functions	Over voltage, under voltage, over temperature, low temperature, over current, short circuit				
	Size (W*D*H)	550*370*740mm	550*370*973mm	550*370*1209mm	550*370*1445mm	550*370*1681mm
	Weight	126Kg	180Kg	233Kg	287Kg	340Kg
	Protection level	IP20				
	Installation condition	Indoor installation				
	Operating Temperature Range	-10~55℃ (Optimal:20~30℃)				
	Storage Temperature	-30~60℃				
	Operating Humidity	5~95%				
Others	Altitude	≤2000m				
	Heat dissipation method	Natural cooling				
	Matched inverter	Pylon, Growatt, Goodwe, Megarevo, Victron, New Electric, Shangweisi, Atess. Gilong				
	Certification	UL1973, UL9540A, IEC62619, FCC, CE-EMC				

HOUSEHOLD PHOTOVOLTAIC ENERGY STORAGE INTEGRATED INVERTER

SINGLE/THREE-PHASE HYBRID INVERTER



Household photovoltaic energy storage integrated inverter, supports on and off-grid mode, a variety of working modes, effectively uses solar energy, increases self-use and grid independence, and reduce electricity costs.



PRODUCT FEATURE

- High reliability, fan-less design, low noise, silicon carbide technology, longer life, three RS485 interfaces, more stable operation, and IP65 outdoor design.
- High compatibility, 15 parallel expansion, supporting AC coupling, plugging and pulling design, easy installation, 2 battery branches, and independent management.
- Intelligent monitoring, cloud + intelligent data analysis, automatic sleep, and VPP.
- Strong load adaptability, main load UPS function, 10ms fast on and off-grid mode switching, independent load control circuit, and 100% three-phase imbalance.



APPLICATIONS

- Power Consumption and Backup
- Grid peak and valley electricity price arbitrage
- Get subsidy from grid dispatching



HOUSEHOLD PHOTOVOLTAIC ENERGY STORAGE INTEGRATED INVERTER

SINGLE/THREE-PHASE HYBRID INVERTER

PARAMETERS/ MODEL		SINGLE PHASE			THREE PHASE			
Off grid parameters	Model	3000S	3600S	5000S	10000T	12000T	15000T	20000T
	Rated output power	3000W	3600W	5000w	10kw	12kw	15kw	20kw
	Rated voltage	220V/230V/240V			3/N/PE,220/380Vac,230/400Vac			
	Rated frequency	50/60Hz						
	Rated output current	13.6A	16.4A	22.7A	15A	18A	22.5A	30A
	Output THDu	<20%			<3%			
On-grid parameters	Rated output power	3000W	3600W	5000W	10kW	12kW	15kW	20kW
	Max output current	13.6A	16.4A	22.7A	16A	20A	24A	32A
	Rated on grid voltage	220V/230V/240V			3/N/PE,220/380V,230/400V,240/415V			
	Max gird input current	16.4A	22.7A	27.2A	29A	35A	44A	59A
	Grid voltage range	184-276V			184-276V			
PV output	Max input power	6000Wp	7200Wp	8000Wp	15000Wp	18000Wp	22500Wp	30000Wp
	Start voltage	95V			220V			
	Max input voltage	600V			1000V			
	MPPT voltage operating range	80-550V			180-960V			
	Full load MPPT voltage range	350-500V			250-850V	290-850V	350-850V	450-850V
	MPPT quantity	2			2			
	Maximum MPPT input group transmission per channel	1			2			
	Rated input voltage	360V			600V			
	Max input current	18A/18A			25A/25A			
	Battery type	Lithium battery			Lithium battery			
Battery parameters	Rated voltage	51.2V			Configuration according to actual working conditions			
	Battery voltage range	42-58V			180-800v			
	Max continuous charge discharge current	75A	85A	100A	25A/25A			
	Max efficiency	97.5%	97.5%	98%	98.20%			
	European efficiency	97.2%	97.2%	97.5%	97.70%			
Efficiency	Max battery charge discharge efficiency	95.2%			97.80%			
	Size (W*D*H)	500*470*180mm			573*509*219mm			
Common parameters	Weight	21Kg			35Kg			
	Noise	<25dB(A)			<45dB(A)			
	Operating temperature	-25°C~+60°C			-25°C~+60°C			
	Cooling method	Natural cooling			Forced air cooling			
	Protection level	IP65			IP65			
	Man-machine interaction mode	LED/APP/WIFI/4G/blue tooth						
	Communication interface	RS485/CAN/DRED/DO/Parallel port						
	Protection	DC switch; DC insulation testing; Residual current detection; Anti-island protection; Overvoltage and overload protection; AC short circuit protection; Overvoltage level: Ac side: III, battery and PV: II; Surge protection; Lightning protection; TYPE II; Input reverse plug protection (IP& Battery)			Dc switch; Over-voltage and over-current protection; Ac short circuit protection; Anti-island protection; Residual voltage detection; PV insulation Impedance detection; Surge protection: Class II; Lightning protection; Input reverse plug protection (PV& Battery)			
	safety certification	IEC62109-1,IEC62109-2,EN62109-1,EN62109-2						
	EMC certification	EN61000-6-1,EN61000-6-2,EN61000-6-3,EN61000-6-4						
Grid-connected certification	VDE-AR-N 4105, C10-11, G98/G99, CEI 0-21, EN50549, NRS 097-2-1, AS 4777.2, R25,UNE217001,UNE217002,NTS 2.1							

PORTABLE ENERGY STORAGE POWER SUPPLY



MODEL		PARAMETERS	
01	Basic parameters	Capacity	2560Wh
02		Net weight	32kg
03		Size (L*W*H)	514*258*357(mm)
04		App	Wi-Fi
05	Output	AC output	10A five-hole socket*2; 16A three-hole socket*1; 3600W (rated power)
06			3960W < P≤4680W, It locks up after 30s
07			4680W < P≤600W, It locks up after 2 seconds
08			P > 7200W, It locks up after 200ms
09		USB-A	1 channel output, 5V/2.4A constant voltage, max power 12W/ channel
10		USB-A fast charge	1 channel output, 5V/2.4A, 9V/2A, 12V/1.5A(constant voltage), max power18W/channel
11		USB-C	2 channels output, 5/9/12/15/20V--5A(constant voltage), max power 100W/channel, supporting PD3.0
12		Car charge output	12V/10A, max power 120W
13		DC5521Output	12V/3A 2 channels, max power 36W/channel
14		Wireless charge	Available, 15W
15		Anderson port	Available, 12V/30A
16	Input	AC Input Power	2200W
17		AC Input Voltage	AC220 10A 50Hz
18		Solar Charge Input	800W
19		Vehicle charger Input	Support 12/24V battery
20	Battery	Cell	LFP/semi-solid battery
21		Life cycles	After 3500 cycles, the remaining capacity is still more than 80%
22		Protection type	High temperature protection, low temperature protection, over discharge protection, over charge protection, overload protection, short circuit protection,
23	Temperature	Discharge Temperature	-20°C~45°C
24		Charge Temperature	0°C~45°C
25		Storage Temperature	0°C~45°C
26	Others	Li-ion battery with power pack	Available
27		Torch	Outdoor lighting and emergency calls
28		Storage box	Data cable set
29		Active extinguishing Device	Avaiable

PORTABLE ENERGY STORAGE POWER SUPPLY



Model		CP330-E	CP500-E	CP1000-E	CP2000-E
01	Rated power	330W	500W	1000W	2200W
02	Rated energy	288.6Wh	519Wh	799.2Wh	2150Wh
03	Standard capacity	3.7V/78000mAh	3.7V/140400mAh	3.7V/216000mAh	3.2V/672000mAh
04	Overload protection	360±20W	550±40W	1100±80W	2200±100W
05	AC output	110V±10%/60HZ	110V±10%/60Hz	110V±10%/60Hz	110V/60HZ pr 220V/50HZ
06	Output wave form	Pure sine wave	Pure sine wave	Pure sine wave	Pure sine wave
07	USB Output	QC3.0/18W	QC3.0/18W	QC3.0/18W	QC3.0/18W
08	Type-C Output	PD60W	PD60W	PD60W	PD60W
09	DC55*2.5 cigarette lighting port output	12V/10A	14V/8A	14V/8A	14V/8A
10	Wireless charge	5W	10W	10W	Supporting, free matching of battery pack
11	Charge input voltage	12-24V	12~26V	12~26V	Mains power (100-240V) directly charges the product
12	Operating temperature	-10-40°C	-10~40°C	-10~40°C	-10-40°C
13	Weight	≈ 3.3kg	≈6.8kg	≈7.5kg	≈31kg
14	Size	205*155*165mm	290*194*200mm	290*194*200mm	460*366*260mm
15	AC output support	US/JA, EUROPE, AU, CN			

3 DATA SERVICE PLATFORM



Condition Diagnosis



Battery Performance/Health Status Assessment, Real-time Battery Safety Diagnosis, Battery Degradation, Cycle Life Prediction, Equipment Operation Status Diagnosis, System Operational Efficiency Evaluation, Economic Diagnosis and Analysis

Energy Management



Local Energy Autonomy Management, Ancillary Services, Electricity Trading

Data Management



Real-time Data Monitoring, Display of Data Reports, Information Push, Preset Strategy Deployment, Collaborative Fault Analysis, Trend Analysis

Intelligent Operation and Maintenance



Electrical Equipment Inspection, Diagnosis, Offline Operation and Maintenance Work Orders Pushed by Battery System Operation and Maintenance Strategy, Evaluation

A brand-new platform based on microservices architecture, with multi-tenant management capabilities Implementing the data flow closed loop of the light storage and charging system from data access to data monitoring, data mining, and data push, realizing the value mining and empowerment of data, and improving the operational efficiency of the system.

4 AFTER-SALES SERVICE



The guidance of Cospower is to improve customer satisfaction, to provide high quality, efficient and professional technical services for customers.

Service aims



2-hour real-time response;
Arriving at the scene within 8 hours;
Solution within 24 hours;
Troubleshooting within 72 hours.



We have nearly 20 regional service centers and spare parts warehouses in 12 countries and regions around the world.



We provide technical services for large-scale projects 100+ times and on-site installation & maintenance trainings 20+ times during the whole year.



The power stations of 10+ provinces are visited during the whole year.

5 COOPERATIVE CUSTOMERS

